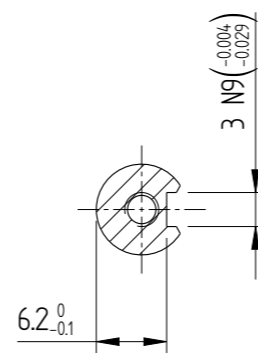
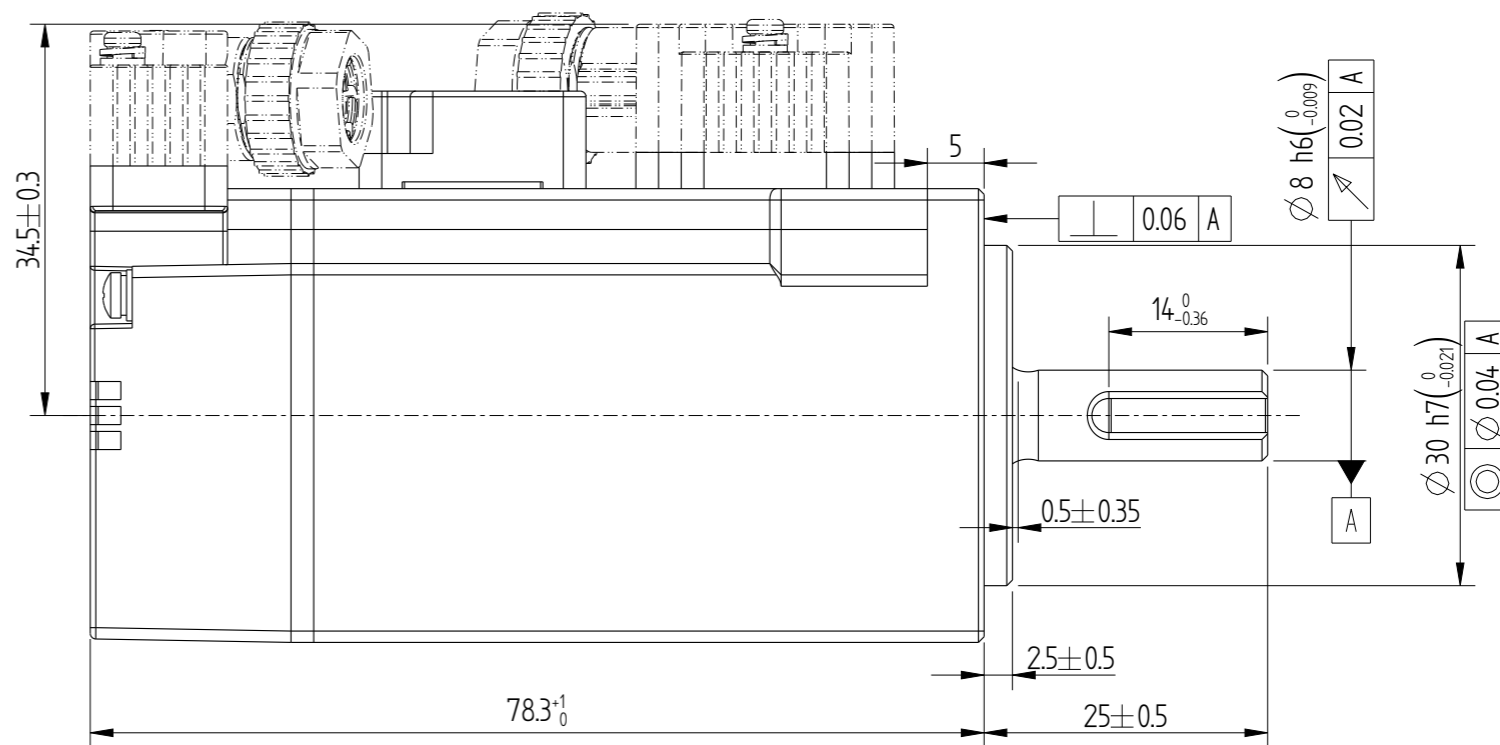
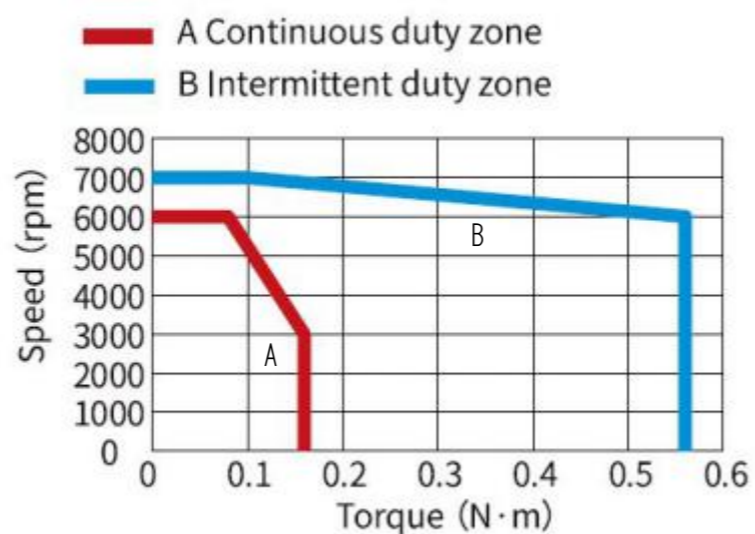
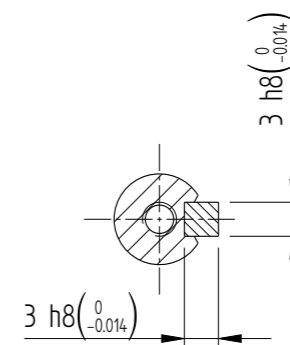


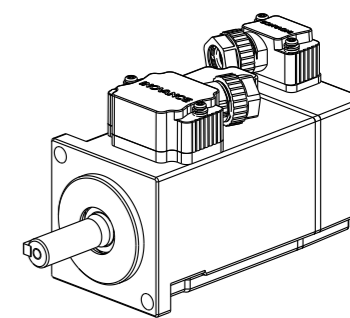
Basic function parameters	
Rated power kW	0.05
Rated voltage V	220
Rated current A	1.27
Peak current at rated speed A	4.78
Rated torque Nm	0.16
Peak torque at rated speed Nm	0.56
Rated speed rpm	3000
Max speed rpm	7000
Rotor inertia $\text{kg} \cdot \text{cm}^2$	$0.04 \pm 10\%$
Encoder resolution	23bit
Insulation class	F(155)
Protection class	IP67
Static torque of brake Nm	≥ 0.32
Brake power supply V	$\text{DC}24 \pm 10\%$
Brake backlash $^{\circ}$	≤ 1.5
Duty cycle	S1
Radial load N	≤ 78
Axial load N	≤ 54



Dimension of shaft end



Dimension of shaft end with key



Mark	
	